

Postal Code 78602

Residential Statistics



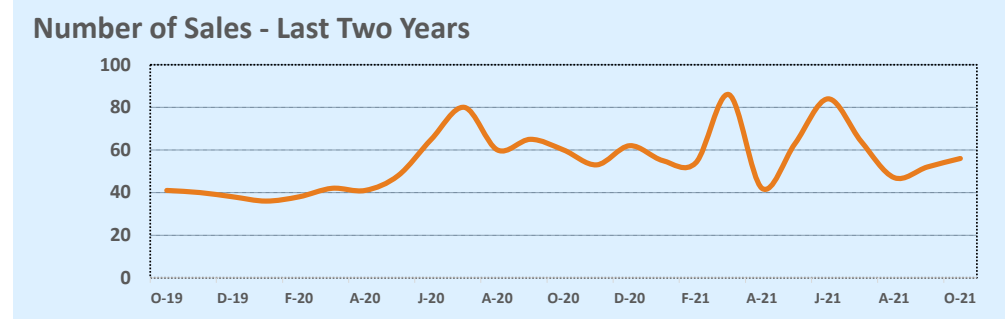
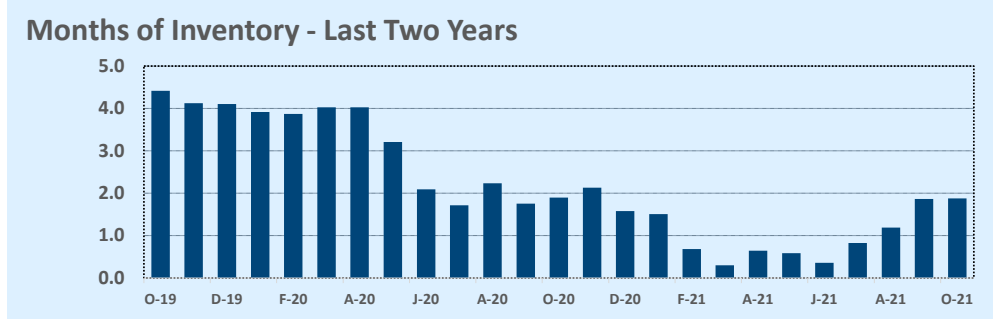
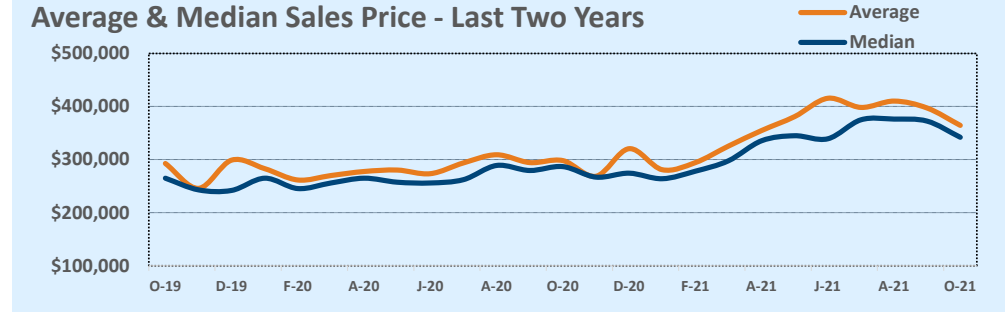
October 2021

Listings	This Month			Year-to-Date		
	Oct 2021	Oct 2020	Change	2021	2020	Change
Single Family Sales	56	60	-6.7%	603	535	+12.7%
Condo/TH Sales	--	--	--	--	--	--
Total Sales	56	60	-6.7%	603	535	+12.7%
New Homes Only	9	16	-43.8%	112	149	-24.8%
Resale Only	47	44	+6.8%	491	386	+27.2%
Sales Volume	\$20,412,061	\$17,889,428	+14.1%	\$219,003,243	\$153,163,776	+43.0%
New Listings	86	72	+19.4%	739	698	+5.9%
Pending	--	--	--	--	--	--
Withdrawn	1	1	--	20	59	-66.1%
Expired	1	1	--	20	59	-66.1%
Months of Inventory	1.9	1.9	-1.3%	N/A	N/A	--

Price Range	This Month			Year-to-Date		
	New	Sales	DOM	New	Sales	DOM
\$149,999 or under	--	2	4	9	14	16
\$150,000- \$199,999	2	1	63	31	26	28
\$200,000- \$249,999	--	6	38	43	71	35
\$250,000- \$299,999	7	10	18	122	118	44
\$300,000- \$349,999	13	12	9	123	115	28
\$350,000- \$399,999	23	9	10	148	95	21
\$400,000- \$449,999	14	3	32	77	56	16
\$450,000- \$499,999	9	5	12	62	35	29
\$500,000- \$549,999	4	1	13	25	16	16
\$550,000- \$599,999	2	3	21	19	14	55
\$600,000- \$699,999	9	2	51	35	17	47
\$700,000- \$799,999	--	2	29	16	14	18
\$800,000- \$899,999	1	--	--	10	2	23
\$900,000- \$999,999	2	--	--	6	5	24
\$1M - \$1.99M	--	--	--	5	4	27
\$2M - \$2.99M	--	--	--	3	--	--
\$3M+	--	--	--	5	1	18
Totals	86	56	19	739	603	30

Average	This Month			Year-to-Date		
	Oct 2021	Oct 2020	Change	2021	2020	Change
List Price	\$363,733	\$300,546	+21.0%	\$358,822	\$290,759	+23.4%
List Price/SqFt	\$210	\$158	+33.1%	\$182	\$148	+22.9%
Sold Price	\$364,501	\$298,157	+22.3%	\$363,189	\$286,287	+26.9%
Sold Price/SqFt	\$209	\$156	+34.0%	\$185	\$146	+26.8%
Sold Price / Orig LP	100.3%	99.0%	+1.3%	101.8%	98.4%	+3.4%
Days on Market	19	49	-60.9%	30	65	-53.8%

Median	This Month			Year-to-Date		
	Oct 2021	Oct 2020	Change	2021	2020	Change
List Price	\$337,500	\$285,347	+18.3%	\$315,000	\$269,000	+17.1%
List Price/SqFt	\$191	\$156	+22.2%	\$176	\$146	+20.6%
Sold Price	\$342,100	\$286,847	+19.3%	\$330,000	\$265,000	+24.5%
Sold Price/SqFt	\$196	\$157	+24.3%	\$179	\$144	+24.9%
Sold Price / Orig LP	100.0%	100.0%	+0.0%	100.0%	99.4%	+0.6%
Days on Market	8	18	-58.3%	8	29	-72.4%



Based on information from the Austin Board of REALTORS® (alternatively, from ACTRIS). Neither the Board nor ACTRIS guarantees or is in any way responsible for its accuracy. The Austin Board of REALTORS®, ACTRIS and their affiliates provide the MLS and all content therein "AS IS" and without any warranty, express or implied. Data maintained by the Board or ACTRIS may not reflect all real estate activity in the market.